

Bruker TruLive3D Data visualization in Fiji

The data generated by the Bruker TruLive3D contains a Fiji header named **bdv.h5**.

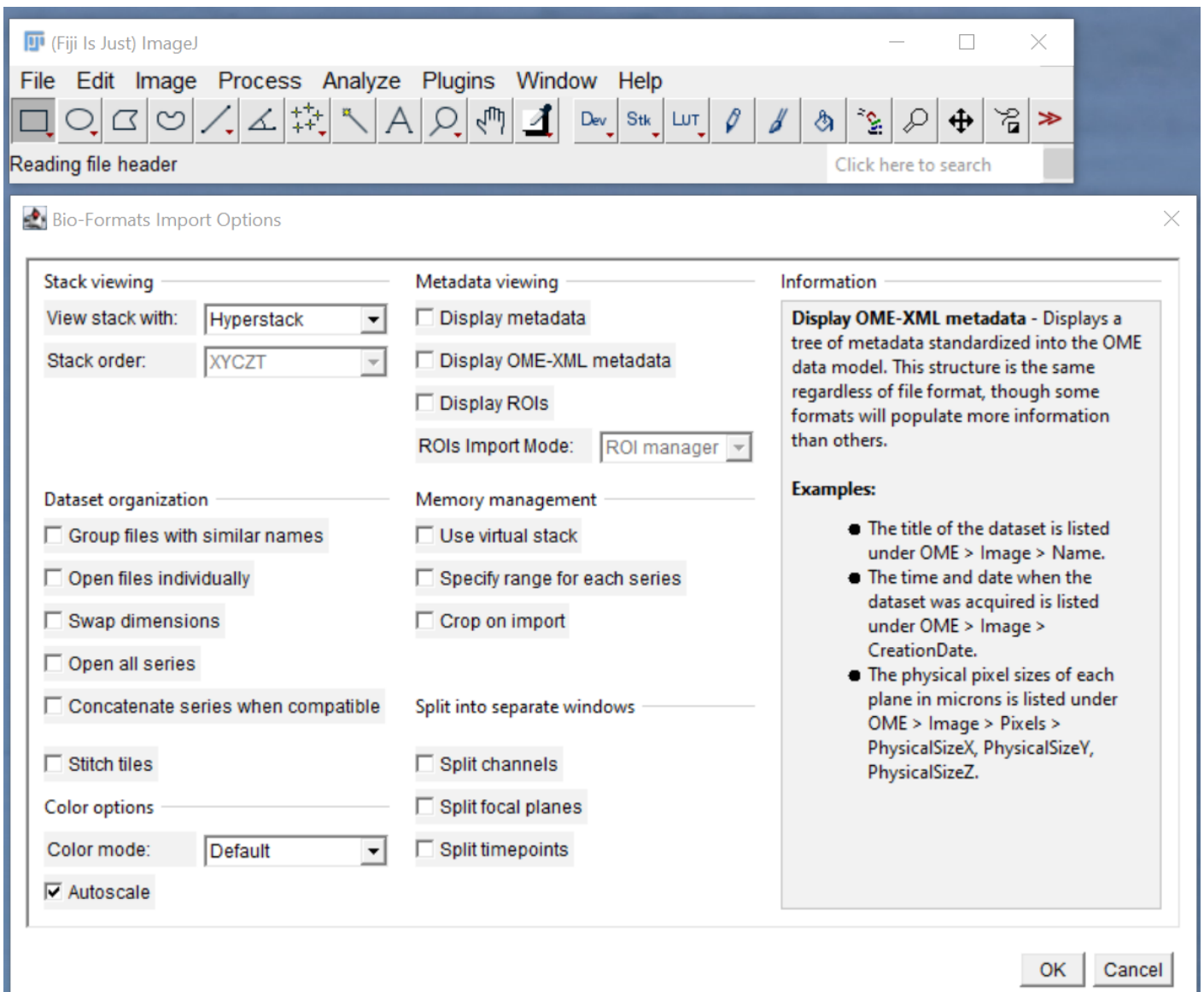
Fiji is an open source software that can be very powerful to **view, process and render your data**. You should really explore its possibilities!

When you install Fiji (ImageJ) it comes with plugins and one of them is called **BigDataViewer**. This plugin has been specifically built to deal with Light-Sheet data. It will open the bdv.h5 file and allow you to visualize your stacks, plane by plane.

Fiji actually has an excellent documentation page on their website which I highly recommend reading and experimenting with!

[Fiji BigDataViewer documentation](#)

- When you drag the bdv.h5 file in Fiji this window will appear:



- Click ok
- This selection will appear for a single stack acquired with two channels:



☒ Series 1: P t00000, W s00 0: 2048 x 2048; 421 planes



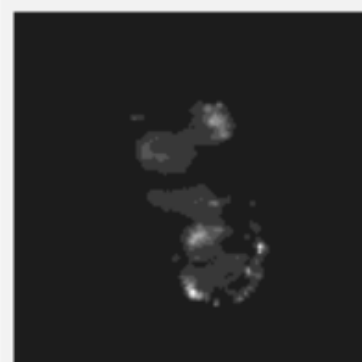
☐ Series 2: P t00000, W s00 1: 1024 x 1024; 224 planes



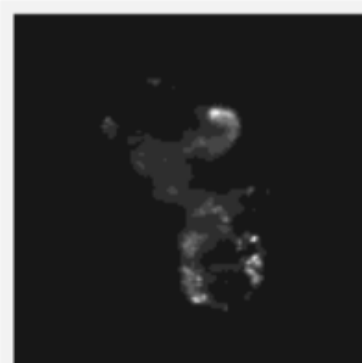
☐ Series 3: P t00000, W s00 2: 512 x 512; 128 planes



☐ Series 4: P t00000, W s01 0: 2048 x 2048; 421 planes



☐ Series 5: P t00000, W s01 1: 1024 x 1024; 224 planes



- Series 1 and Series 4 are channel 1 and 2 in full resolution. You should select them both or one at a time to visualize the data in full resolution. Series 2, 3, 5 and 6 are lower resolution versions of the data in the two channels.
 - Another useful plugin for Big Data in Fiji is **BigDataProcessor**. You can download it [here](#).
-

Revision #2

Created 22 November 2024 23:08:32 by Evolene Premillieu

Updated 5 December 2024 19:18:31 by Evolene Premillieu