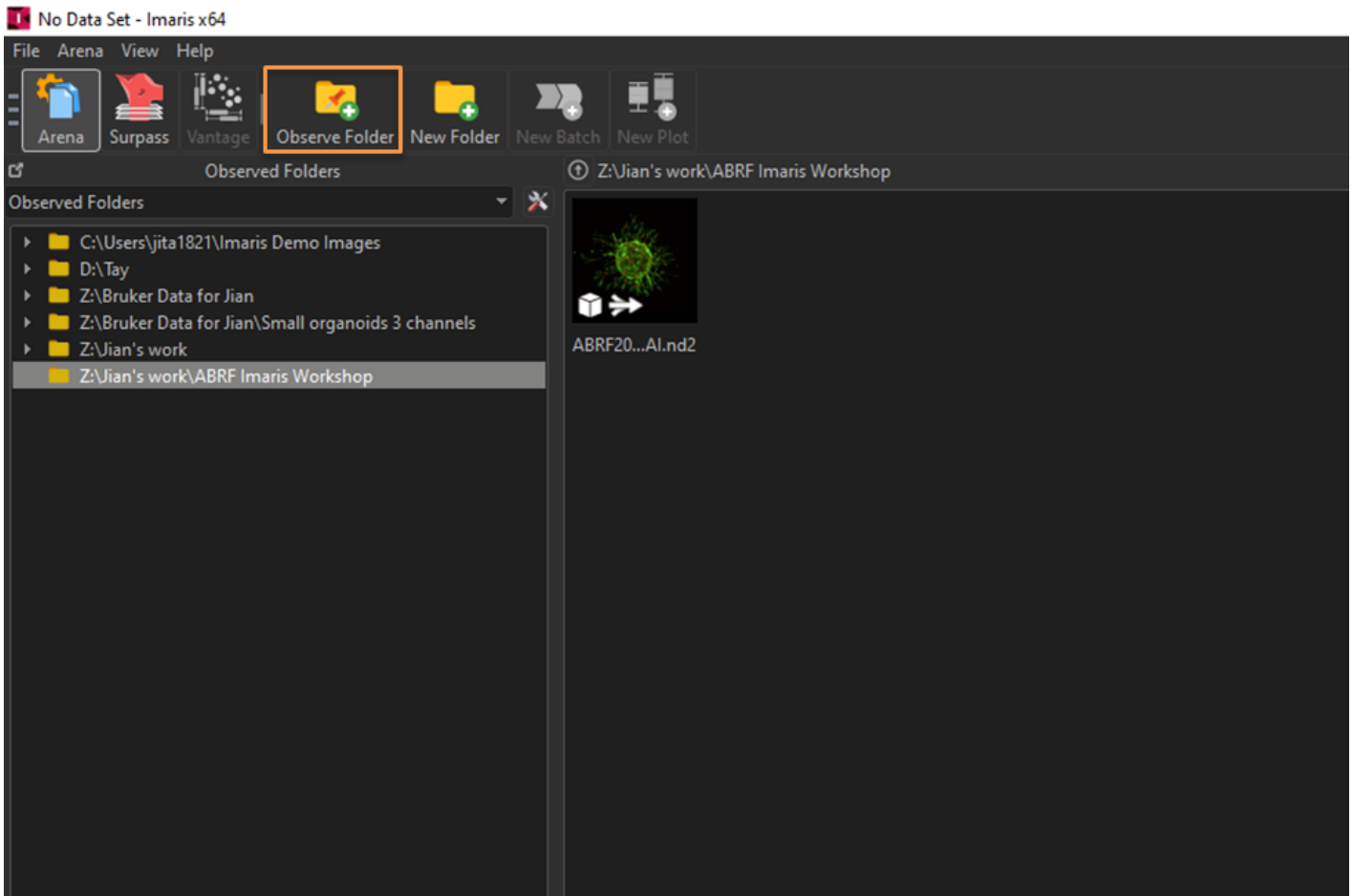


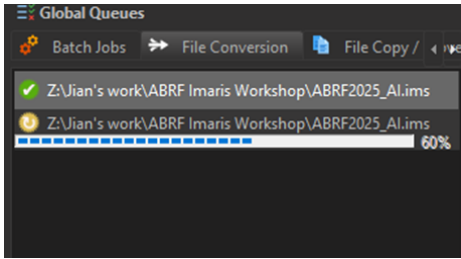
# Getting started with Imaris



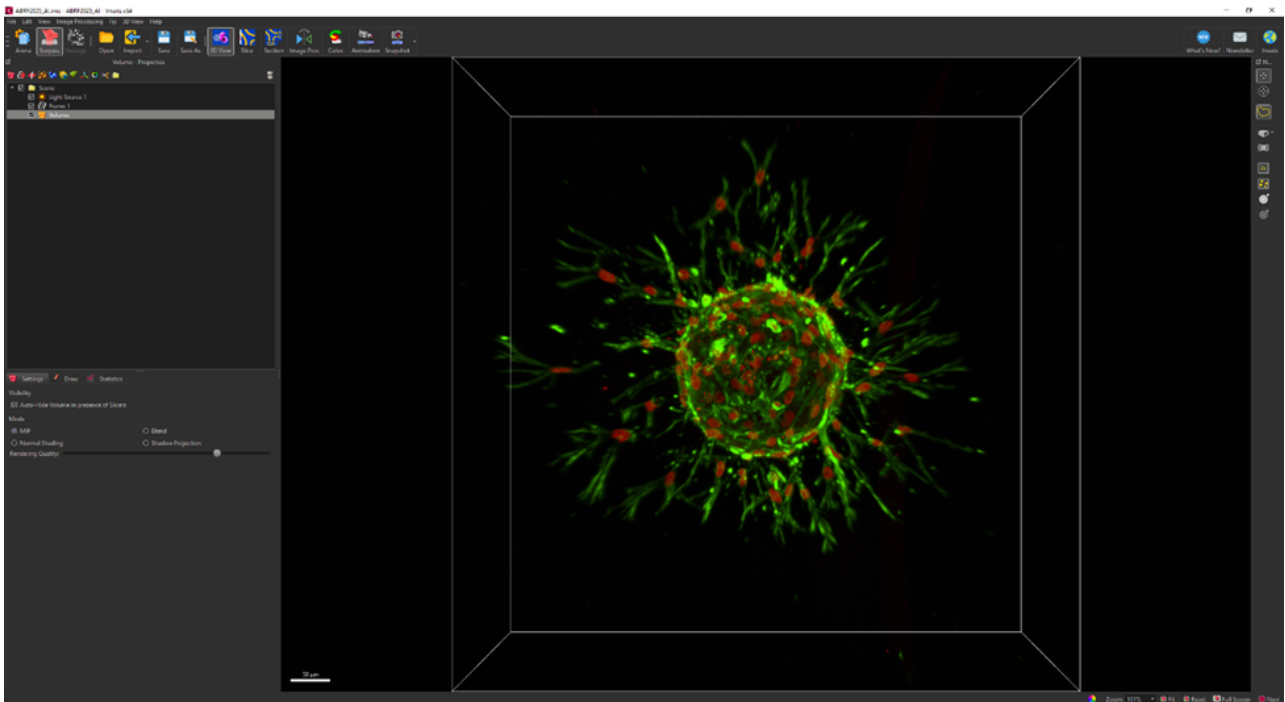
## To load an image in Imaris

1. Make sure you are in the **Arena** view (see above).
2. Click on **Observe Folder**, then select the folder with your images in the dialog box that pops up.
3. If you have not opened the file before, the file will likely have an ND2 extension. Double-click on the file to convert the image into the native Imaris format (IMS).

4. The Global Queues panel on the bottom right will show you the progress of the conversion.



5. Once the conversion is complete, double-click the file again to open it in the **Surpass** view.



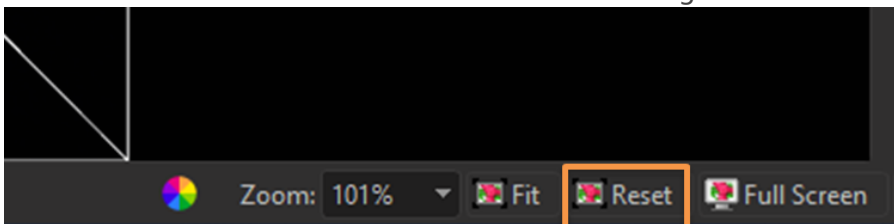
## Basic controls

### To rotate or pan the image:

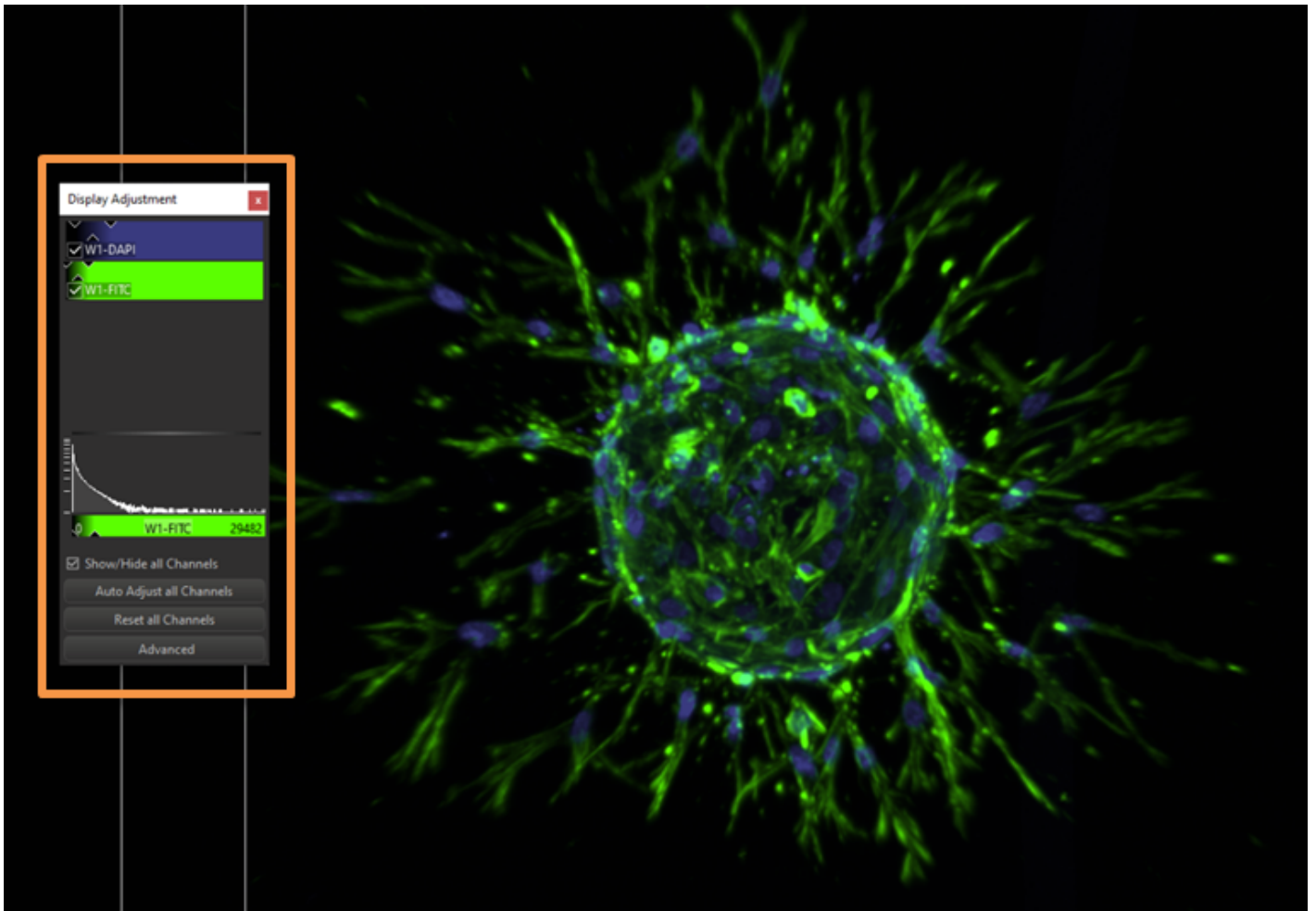
- Left click + drag will rotate the view
- Right click + drag will translate the image

### To reset the view:

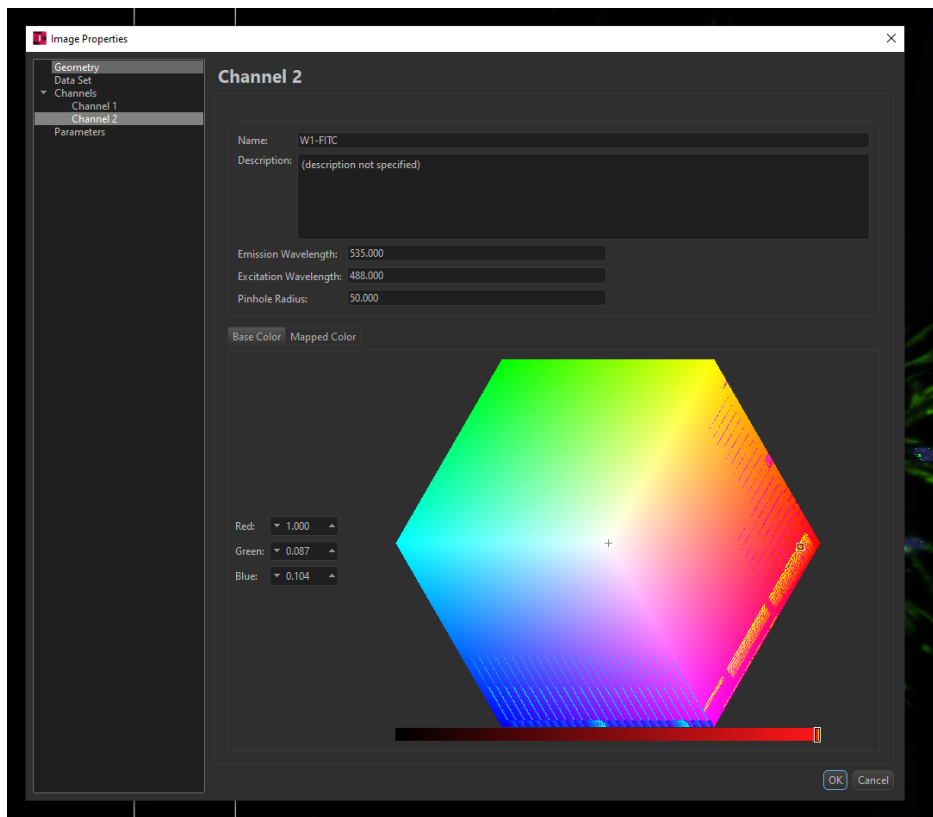
- Click on the "Reset" button on the bottom right of the screen



### To adjust the display:



- If the Display Adjustment box is hidden, select **Edit > Show Display Adjustment**.
- To adjust the intensity of the displayed image, click and drag the sliders.
- Check/uncheck the boxes next to each channel to show/hide channels.
- Click on the channel name to open the Image Properties dialog box. You can use this to change colors if desired.



Revision #1

Created 10 March 2025 20:16:18 by Jian Tay

Updated 10 March 2025 20:27:38 by Jian Tay